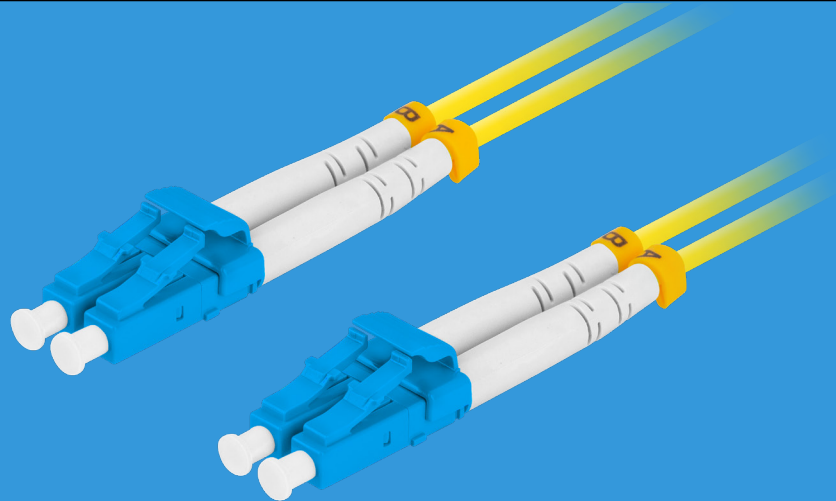


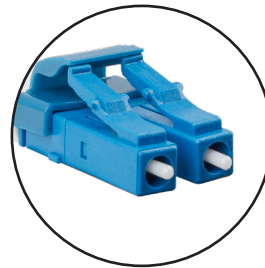
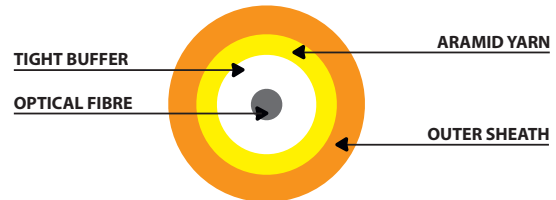
FO-LULU-SD11-0___-YE

FIBER OPTIC PATCHCORD



PRODUCT SPECIFICATION:

- Connector type: LC
- Polishing standard: UPC - ULTRA PHYSICAL CONTACT
- Fiber type: G657A1
- Type of optical fiber: single-mode (SM)
- Fiber diameter: 9/125 μm
- Cable Construction: DUPLEX
- Cable diameter: 3.0 mm
- Coating: LSZH, LSOH (Low smoke zero halogen)
- Insertion loss: $\leq 0,25$ dB
- Return loss: ≥ 50 dB
- Operating temperature: $-40 - 85^{\circ}\text{C}$
- Minimum bend radius: 7.5 mm
- Color: yellow
- Cable length: 1 m, 2 m, 3 m, 5 m



CAT.NO	FULL NAME
FO-LULU-SD11-0010-YE	FIBER OPTIC PATCHCORD SM LC/UPC-LC/UPC DUPLEX 3.0MM LSZH G657A1 1M YELLOW LANBERG
FO-LULU-SD11-0020-YE	FIBER OPTIC PATCHCORD SM LC/UPC-LC/UPC DUPLEX 3.0MM LSZH G657A1 2M YELLOW LANBERG
FO-LULU-SD11-0030-YE	FIBER OPTIC PATCHCORD SM LC/UPC-LC/UPC DUPLEX 3.0MM LSZH G657A1 3M YELLOW LANBERG
FO-LULU-SD11-0050-YE	FIBER OPTIC PATCHCORD SM LC/UPC-LC/UPC DUPLEX 3.0MM LSZH G657A1 5M YELLOW LANBERG