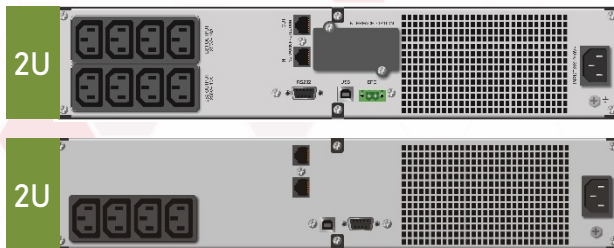


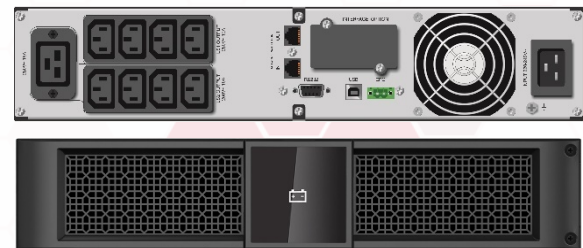
VI 1000-3000 RT HID



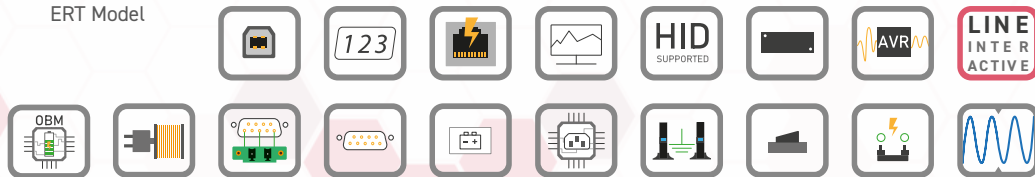
- Pure Sine Wave Output
- Output Power Factor 0.9
- Human Interface Device (HID) supported
- Slim 2U design
- Includes an Intelligent Slot
- It supports AC generators
- It has an Optimized Battery Management
- Programmable Segment
- The RS-232 includes fixed Dry Contacts



RT Model



ERT Model



The PowerWalker VI RT HID is by far the most advanced Line-Interactive UPS with pure sine wave output and Human Interface Device (HID) support. It was designed to fulfill the high-power quality demand in IT-environment while keeping the line-interactive topology. The VI RT HID offers full protection for devices such as servers, network/telephone communication systems and small industrial applications. Due to its 2U design and adjustable LCD display, the UPS can be installed inside any regular 19" rack cabinet or used as a tower system (Tower holder included).

General Features	ERT		RT		
Power Capacity	1000VA/ 900W	1000VA/ 900W	1500VA/ 1350W	2000VA/ 1800W	3000VA/ 2700W
Output Power Factor	0.90				
LINE Mode Full Load	95.0%	96.8%	97.8%		95.0%
Charger	1.5A				
Input Specifications	Values				
Input Voltage Range (Normal Mode)	176-278 VAC				
Frequency (Synchronized Range)	50Hz or 60Hz				
Input Type	IEC C14 or IEC C14 ^{UK}			IEC C20 or IEC C20 ^{UK}	
Output Specifications	Values				
Nominal Output Voltage	220/230/230 VAC				
Voltage Regulation	+/- 5%				
Frequency (Battery Mode)	+/- 0.1Hz				
Outlets	IEC C13 (4)	IEC C13 (8)		IEC C13 (8) + IEC C19 (1)	
Battery Specifications	Values				
Batteries	2 x 12V/ 9Ah	3 x 12V/ 7Ah	3 x 12V/ 9Ah	6 x 12V/ 7Ah	6 x 12V/ 9Ah
DC Voltage	2 x 12V	3 x 12V		6 x 12V	
Recharge Time	8h to 90%		4h to 90%		
Full Load Backup Time	3 min	4 min	3 min	4 min	3 min
Half Load Backup Time	10 min	10 min	7 min	10 min	7 min
Transfer Time [AC to Battery]	2-6 ms Typical				