



High Voltage Stackable Battery

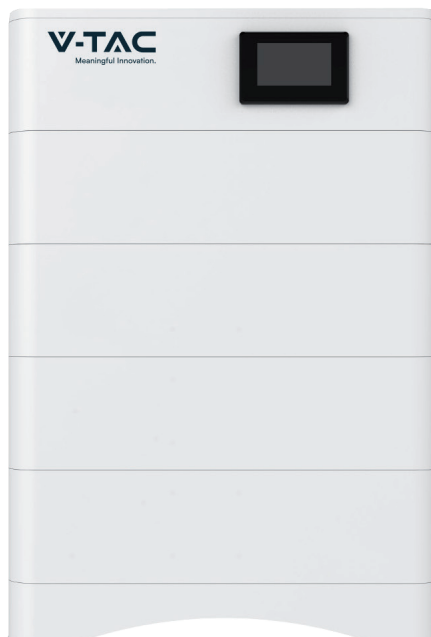
Smaller Footprint
higher energy density benefit from latest LFP technology

Expandable
Maximum 5.12kwh X 10 Stack per unit
6 parallel Units

Monitor
Real-time monitoring of battery charging and discharging, online system updates and maintenance

10 YEAR WARRANTY

Compatible with:



Battery	SKU	EAN
20.48kWh 5.12 x 4	120024	3800170224292
25.6kWh 5.12 x 5	120025	3800170224308
30.72kWh 5.12 x 6	120026	3800170224315
35.84kWh 5.12 x 7	120027	3800170224322
40.96kWh 5.12 x 8	120028	3800170224339

Technical Data



SKU	120024	120025	120026	120027	120028
Battery Module Qty InSeries(Optional)	4	5	6	7	8
System Nominal Voltage(V)	204.8	256.0	307.2	358.4	409.6
System Nominal Capacity(KWh)	20.48	25.60	30.72	35.84	40.96
Usable Capacity(KWh)	16.38	20.48	24.58	28.67	32.77
Dimension (mm)	590*420*849	590*420*1000	590*420*1151	590*420*1302	590*420*1453
Weight (Kg)	222.4	270.9	319.4	367.9	416.4
Charge/Discharge Current (A)	40				
Communication	CAN				
Altitude	≤2000m				
Cycle Life	25±2°C,0.5C/0.5C,EOL70%≥6000				
Monitoring Parameters	System voltage,Current,cell voltage,cell temperature,module temperature				
SOC	Intelligent algorithm				
Working Temperature	0~35°C				
Storage Temperature	0~35°C				
Installation Mode	Stackable				
Battery Type	LifePO4(LFP)				
Module Energy(kWh)	5.12				
Module Nominal Voltage(V)	51.2				
Module Capacity(Ah)	100				
DOD	90%				
IP Rating	IP65 when stacked				

1. DC Usable Energy, test conditions: 80% DOD, 0.2C charge & discharge at 25°C. System usable energy may vary due to system configuration parameters.

2. The current is affected by temperature and SOC.

3. The warranty is due whichever reached first of warranty period or life cycle power.

System Components(Included)

HIGH VOLTAGE BATTERY CLUSTER CONTROL BOX

SKU: 12151

EAN: 3800170224254

Operating Voltage	120 750Vdc
Nominal Charge/Discharge Current	40A
Max Charge/Discharge Current	50A
Operating Temperature Range	-10~55°C
Dimension (W/D/H)	590*420*165 mm
Weight Approximate	16.1kg

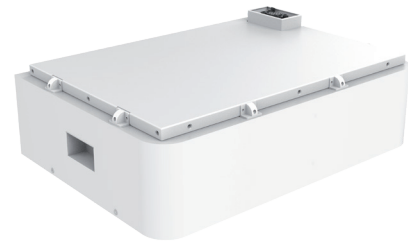


RECHARGEABLE LI-ION BATTERY MODULE

SKU: 12002

EAN: 3800170224261

Battery Type	LiFePO4(LFP)
Nominal Voltage	51.2Vdc
Rated Capacity	100Ah
Rated Energy	5.12kWh
Nominal Charge/Discharge Current	40A
Peak Discharge Current	50A
Charge Temperature	0~45°C
Discharge Temperature	-10 °C~ 55°C
Storage Temperature	0 °C~ 35°C
Dimension (W/D/H)	590*420*194mm
Weight Approximate	45.6kg



BATTERY MODULE BASE

SKU: 12152

EAN: 3800170224278

Dimension (W/D/H)	590*420*80mm
Weight Approximate	8.5kg



STANDARD 2-METER COMMUNICATION CABLE CONNECTED TO THE EXTERNAL DEVICE



STANDARD 2-METER POWER CABLE CONNECTED TO THE EXTERNAL PCS

