

V-TAC

Meaningful Innovation.

WEEE Number: 80133970

INSTRUCTION MANUAL LED GLASS TUBE

TECHNICAL DATA

MODEL	VT-6279	VT-1221	VT-1575
SKU	7796,7797,7798	2981,2982,2983	7799,7801,7803
WATTS	9W	18W	20W
LUMENS <small>@Sphere360</small>	850 Lm	1850 Lm	2100 Lm
CRI	>80	>80	>80
DF	>0.5	>0.7	>0.7
BEAM ANGLE	160°	160°	160°
BODY TYPE	Glass	Glass	Glass
BASE	G13	G13	G13
IP RATING	IP20	IP20	IP20
LIFE SPAN	25,000 Hours	25,000 Hours	25,000 Hours
ON/OFF CYCLE	>15,000	>15,000	>15,000
DIMENSION	28x600 mm	28x1200 mm	28x1500 mm
INPUT POWER	AC:220-240V, 50Hz	AC:220-240V, 50Hz	AC:220-240V, 50Hz

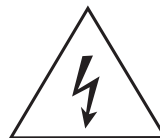


INTRODUCTION & WARRANTY

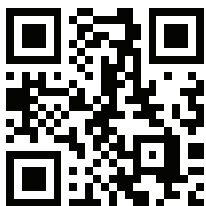
Thank you for selecting and buying V-TAC product. V-TAC will serve you the best. Please read these instructions carefully before starting the installation and keep this manual handy for future reference. If you have any another query, please contact our dealer or local vendor from whom you have purchased the product. They are trained and ready to serve you at the best. The warranty is valid for 3 years from the date of purchase. The warranty does not apply to damage caused by incorrect installation or abnormal wear and tear. The company gives no warranty against damage to any surface due to incorrect removal and installation of the product. The products are suitable for 10-12 Hours Daily operation. Usage of product for 24 Hours a day would void the warranty. This product is warranted for manufacturing defects only.



This marking indicates that this product should not be disposed of with other household wastes.



Caution, risk of electric shock.



MULTI-LANGUAGE MANUAL QR CODE

Please scan the QR code to access the manual in multiple languages.



Points de collecte sur www.quefairedemesdechets.fr



IN CASE OF ANY QUERY/ISSUE WITH THE PRODUCT, PLEASE REACH OUT TO US AT: SUPPORT@V-TAC.EU
FOR MORE PRODUCTS RANGE, INQUIRY PLEASE CONTACT OUR DISTRIBUTOR OR NEAREST DEALERS.
V-TAC EUROPE LTD. BULGARIA, PLOVDIV 4000, BUL.L.KARAVELOW 9B

WARNING

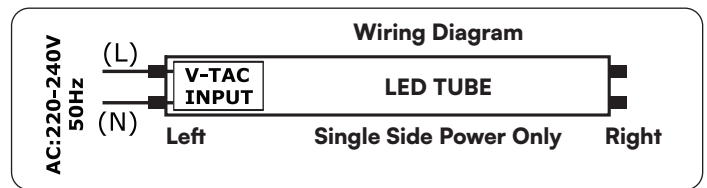
- Installation should only be done by a certified electrician.
- Operation environment temperature: from -20°C to +45°C.
- Do not use DC electricity.
- Do not modify the fitting to be used with the LED Tube.
- V-TAC LED Tubes are NOT designed to be used in emergency operations.
- For Indoor use only.
- Do NOT use with electronic ballasts. V-TAC LED tubes are not compatible with electronic ballast circuit. In order to use the electronic ballast fitting you must ensure to remove the electronic ballast from the fitting and rewire the circuit as per new fitting installation as shown below. Ensure the installation and wiring is carried out by certified electrician.

PACKING

- LED Tube (1PC)
- Instruction Manual (1PC)
- Dummy Starter (1PC)

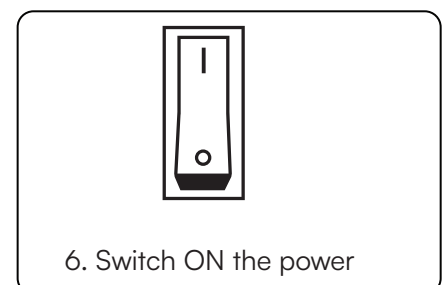
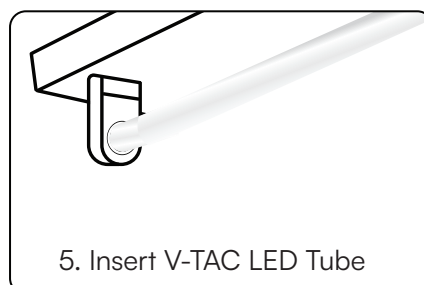
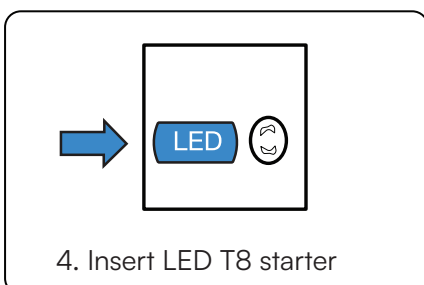
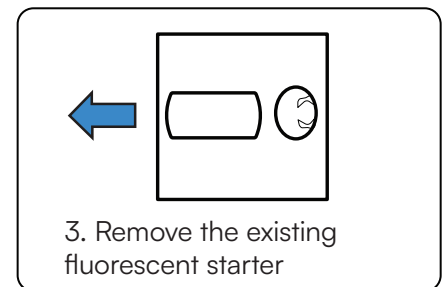
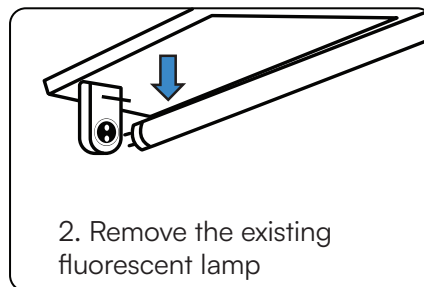
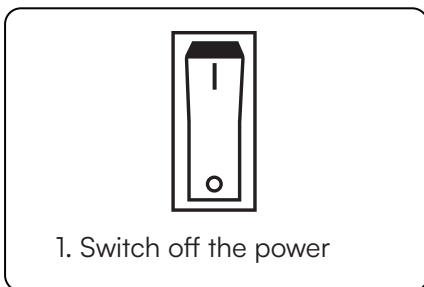
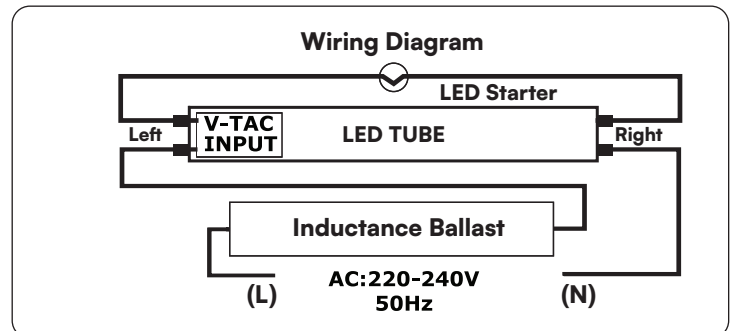
NEW FITTING INSTALLATION

- Installation should only be done by a certified electrician.
- Switch Off the power.
- Ensure the wiring diagram is followed as highlighted.
- Insert V-TAC LED Tube.
- Switch On the power to test the light.



INSTALLATION & REPLACEMENT OF FLUORESCENT LAMP (SINGLE MAGNETIC BALLAST CIRCUIT)

- Installation should only be done by a certified electrician.
- Please refer to the wiring diagram for replacing fluorescent tube on a single magnetic ballast circuit with V-TAC LED Tube.



IN CASE OF ANY QUERY/ISSUE WITH THE PRODUCT, PLEASE REACH OUT TO US AT: SUPPORT@V-TAC.EU
FOR MORE PRODUCTS RANGE, INQUIRY PLEASE CONTACT OUR DISTRIBUTOR OR NEAREST DEALERS.
V-TAC WEST EUROPE LTD. GROUND FLOOR, 71 LOWER BAGGOT STREET, DUBLIN O2, IRELAND DO2 P593

IN CASE OF ANY QUERY/ISSUE WITH THE PRODUCT PLEASE REACH OUT TO US AT SUPPORT@VTACEXPORTS.COM
5A TUNGSTEN PARK, DOWNS ROAD, WITNEY, OXFORDSHIRE, OX29 OAX, UK.